



1. *Introduction*
2. *Landscape*
3. *Projects*
4. *NetworkNews*
5. *Partner Forum*
6. *Publications*
7. *Outlook*

NEWSLETTER FEBRUARY 2004

Issue No. 2 – 20th February 2004

Introduction

Since the distribution of the first Newsletter in April 2003, the number of LANDSCAPE EUROPE network partners has grown steadily. Many of us had the opportunity to meet rather frequently during various professional events throughout Europe, allowing us to exchange thoughts and visions in rather direct and practical ways. Having left behind the first phase of formally and legally establishing LANDSCAPE EUROPE as an expertise network in the European research and policy world, we were able to dedicate much more time and thoughts to true research activities and questions. Our increasing involvement in the preparation and implementation of common projects should hence be seen as the most essential sign of a network in progress.

LANDSCAPE EUROPE has been able to:

- provide active input to the further development of the European Landscape Convention (we congratulate the Council of Europe with this important Convention coming into force by March 1st 2004!);
- progress with the establishment of a common reference system for European landscape character areas and OECD landscape indicators;
- co-develop an Integrated Project proposal under the EU's 6th Framework Programme;

Regarding the latter we are also pleased to report that we have established good and fruitful working relationships with Landscape Tomorrow and their partners.

We were pleased to have received many positive reactions to our first newsletter, including many new subscriptions. While presenting the most actual update on LANDSCAPE EUROPE's activities using the previous topical sequence, this newsletter introduces a new item titled *Landscape*. This is meant to provide place for members and non-members of LANDSCAPE EUROPE to present specific views or reflections on landscape related issues in the form of a short article. We hence would like to invite readers of this newsletter to consider a personal contribution within this new 'column' to be included in the next version. Please also note that LANDSCAPE EUROPE's 2004 General Assembly is scheduled for May 18th, hosted by NERI in Copenhagen.

For more information you are welcome to visit the LANDSCAPE EUROPE's website:
<http://www.alterra-research.nl/landscapeeurope>

Please feel free to forward the newsletter to other interested people in the wide field of landscape science that seeks to integrate many facets of natural, social and economic research. If you do so, please ask them to mail (landscape.europe@wur.nl) their contact information. If you no longer wish to be on our distribution list, please inform us as well.

On behalf of LANDSCAPE EUROPE:

Bas Pedroli
email: Bas.Pedroli@wur.nl

Dirk Wascher
email: Dirk.Wascher@wur.nl

Landscape

The Millennium Assessment and Cultural Landscapes by D.M. Wascher

Background

The Millennium Ecosystem Assessment (MA) was launched by U.N. Secretary-General Kofi Annan in June 2001 as an international work program designed to meet assessment needs of the Convention on Biological Diversity, Convention to Combat Desertification, the Ramsar Convention on Wetlands, and the Convention on Migratory Species, as well as needs of other users. Focusing on the ecosystem approach, the MA is designed to identify priorities for action and response options, to provide tools and foresights for planning and management; and to help building individual and institutional capacity to undertake integrated ecosystem assessments and to act on their findings. The four-year MA budget is approximately \$17 million, with more than \$7 million of additional support through in-kind contributions. Major financial support for the MA is being provided by the Global Environment Facility (GEF), the United Nations Foundation, The David and Lucile Packard Foundation, The World Bank, the United Nations Environment Programme (UNEP), the Government of Norway, and the Kingdom of Saudi Arabia.

Structure

Guided by a Conceptual Framework, four Working Groups are undertaking the scientific work of the Millennium Assessment: (1) Conditions and Trends, (2) Scenarios, (3) Responses, and (4) Subglobal. These Working Groups are co-chaired by natural and social scientists from developed and developing countries; these eight co-chairs and four other experts comprise the Assessment Panel, chaired by Angela Cropper and Harold Mooney. Part of 'Conditions and Trends' is a Chapter 18 "Cultural and Amenity Services" coordinated by the Chapter Lead Authors (CLAs) P.S. Ramakrishnan from India and LANDSCAPE EUROPE member Rudolf de Groot from Wageningen University, The Netherlands. The existing draft of Chapter 18 includes a section on 'Spatial distribution, magnitude and trends in Cultural and Amenity Services' with sub-sections on knowledge systems; cultural diversity and identity; spiritual, inspirational and aesthetic services; recreation and tourism; as well as on 'cultural landscapes and heritage services', the latter led by Dirk Wascher (Alterra, Wageningen) and Mechthild Rössler (UNESCO, Paris). From a total of currently 50 pages for the whole chapter, the draft section on landscapes comprises 6 pages and will need to be shortened.

Challenges

The inclusion of 'cultural landscapes' is a further step toward putting landscapes high on the agenda of global concerns. Since the MA is deliberately taking the ecosystem approach, there is a specific need to portray cultural landscape issues in their direct relationship with closely associated types of ecosystems. The necessity to provide global overviews on 'conditions and trends' confronts researchers with severe data gaps and conceptual challenges: international geo-referenced data on the presence of cultural landscapes is extremely fragmented; most international data on protected landscapes (e.g. IUCN Category V areas or UNESCO World Heritage Sites of Cultural Landscape sites) are not available as polygon files but mainly as point-coordinates. This allows in principle the linkage with global distribution maps of MA ecosystem types, but the type of cultural landscape cannot be specified in most cases. The current draft chapter seeks to compensate these limitations by making use of tables and case studies, illustrating the most prominent issues. Since everywhere on earth cultural landscapes are intrinsically linked to human land use and resource management, European research initiatives such as LANDSCAPE EUROPE should offer their services in more pro-active ways at the global level in order to overcome the observed limitations and to meet the challenges of future reports and assessments.

3. Projects

3.1 SENSOR project proposal

On February 16th, one day before the official deadline for the EU 6th Framework Programme's 2nd Call, lead coordinator ZALF has turned in the Integrated Project (IP) proposal **SENSOR** (**S**ustainability Impact Assessment: Tools for **EN**vironmental, **S**ocial and **Ec**onomic Effects of Multifunctional Land Use in European **R**egions). The proposal has been co-led by Alterra (NL) and Cottbus University (DE) and includes 35 partners in total.

Abstract (shortened): [...] The technical objective of SENSOR is to build, validate and implement sustainability impact assessment tools (SIAT), including databases and spatial reference frameworks for the analysis of land and human resources in the context of agricultural, regional and environmental policies. The scientific challenge is to establish relationships between different environmental and socio-economic processes as characterised by indicators considered to be quantitative measures of sustainability. Scenario techniques will be used within an integrated modeling framework, reflecting various aspects of multifunctionality and their interactions. The focus will be on European sensitive regions, particularly those in accession countries, since accession poses significant questions for policy makers regarding the socio-economic and environmental effect of existing and proposed land use policies.[...] SIAT will be made available to decision makers at the European and regional level, providing user-friendly interfaces and scientifically sound procedures for the assessment of environmental and monetary responses of policy options. Cost-benefit and cost-effectiveness analysis of policy implementation will be an integral part of the SIAT's functions.

LANDSCAPE EUROPE's involvement is substantial: with 3.7 Mill Euros (about one third of the total grant request) a total of 11 network partners are included which we consider to be a long-term investment into our international work. Within the SENSOR approach, LANDSCAPE EUROPE will be mainly engaged in Module 3 on "Regional sustainability problems, risks and thresholds" and in Module 4 on the main deliverable, the "SIAT". In this respect, LANDSCAPE EUROPE will be involved in some of the most future-oriented research components: regional integration, policy orientation, stakeholder involvement and operationalisation.

Of course one big question remains: will the proposal be approved? Though nobody can answer this question, we feel that there are positive indications from various sides to be optimistic. If the evaluation process should be fast, we might hear about the result already in March. Then, contract negotiations are likely to take long so that the project will not start before autumn 2004.

3.2 ELCAI project implementation

The EU FP5 Accompanying Measure project "European Landscape Character Assessment Initiative" (ELCAI) has reached its Mid-Term phase with the Interim Report being due in March 2004. ELCAI's key objective is to review existing approaches to Landscape Character Assessment (LCA) and to examine methodological opportunities of linking regional/national scale approaches with a large scale European view (please see item 3.4). The projects scientific review (WP1) included a total of 48 distinct examples of LCA activity provided by 14 project partners. The majority of these are national or sub-national in their extent or intent, with just three examples that have an international context. This is to support future policy implementation of European landscape conservation measures. End of January 2004 the 3rd technical meeting of the project was held where work packages reports have been presented. Currently, the University of Évora is preparing the ELCAI International Workshop to be organised on June 3-4 in Portugal. Main focus of this event will be the exchange with stakeholders from economic sectors and policy with the goal to explore practical aspects of LCA at the various levels. The final project report are due one year from now. Please consult the ELCAI web pages for more detailed information: www.elcai.org

3.3 ETLAS project finalisation

The main objective of the “**Character Assessment of European Transfrontier Landscapes**” (ETLAS) project is to present current issues in European transfrontier landscapes through an attractive publication in which national experts present 14 different transfrontier landscapes in Europe. The landscapes selected cover a wide range of national borders: Portugal- Spain, Italy-France, Hungary-Austria, Czech Republic-Germany-Austria, Belarus-Poland, Germany-The Netherlands, Belgium-The Netherlands, Republic of Ireland-Northern Ireland, and regional borders: Brittany-Normandy (France), Lombardy-Piedmont (Italy), and five municipalities in the Lagkadas County in the North of Thessaloniki (Greece). The landscapes chosen play very different roles in each of the countries or regions. Each landscape is therefore unique and it is very useful to describe them individually as complete as possible and in a simple way. Therefore, every case study is presented in four to five pages, which include (i) a general introduction dealing with type of landscape, comparison to other landscape types in the country, socio-economic perspectives, historical aspects, biodiversity issues, cultural identity and pressing environmental problems; (ii) description with a map the landscape profile; (iii) SWOT analyses, to highlight the key issues and the links between them; (iv) regional contacts; and (v) useful web-site links. A final chapter summarises and integrates the main economical, social, environmental and political issues for future strategy on EU landscapes.

A draft of this publication was presented during the 3rd Conference of the European Landscape Convention on the 27-28 November 2003 in Strasbourg, organised by the Council of Europe. It received positive support from the international scientific and political community present in the conference.

3.4 European Landscape Typology Map

Since several years, Alterra has been engaged in developing an advanced **European Landscape Classification** combining different layers of the most recent geographic data while drawing upon existing national approaches. The need for developing a European landscape map received a first high level policy attention in the making of the Dobříš Assessment of Europe’s Environment, and in the Action Plan on Landscapes as part of the Pan-European Strategy for Biological and Landscape Diversity launched by UNEP and the Council of Europe. Since last autumn, the long awaited progress seems to be in reach: after having refined a region-oriented methodological approach using subsets of Corine land cover data, European soil data (parent material) and topography, a first prototype featuring about 200 unique landscape units distributed of more than 1000 polygons could be produced for major parts of Europe. In 2004, this map is going to be extended to full Pan-European coverage and will be further refined on the basis of ELCAI partner contributions (see also item 3.2, and Fig. 3.4.1 and 3.4.2 on following page).

Figure 3.4.1: Data layers for European landscapes for the Netherlands

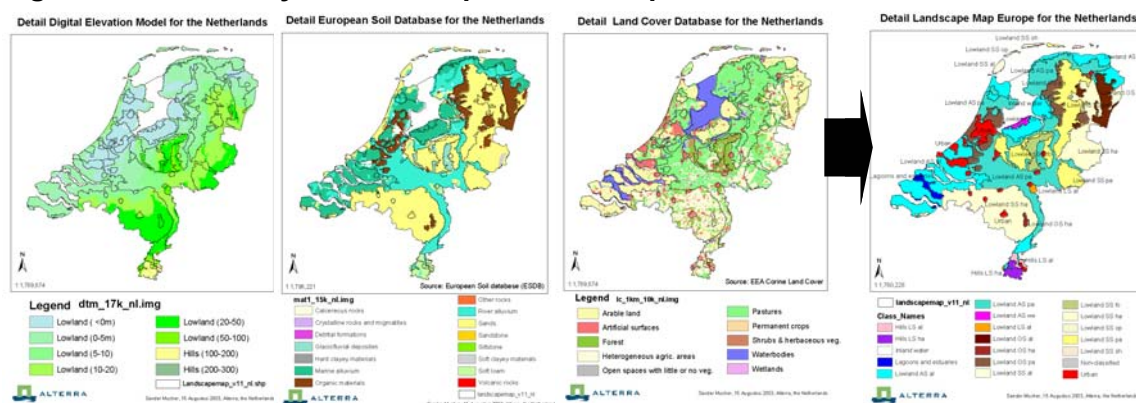
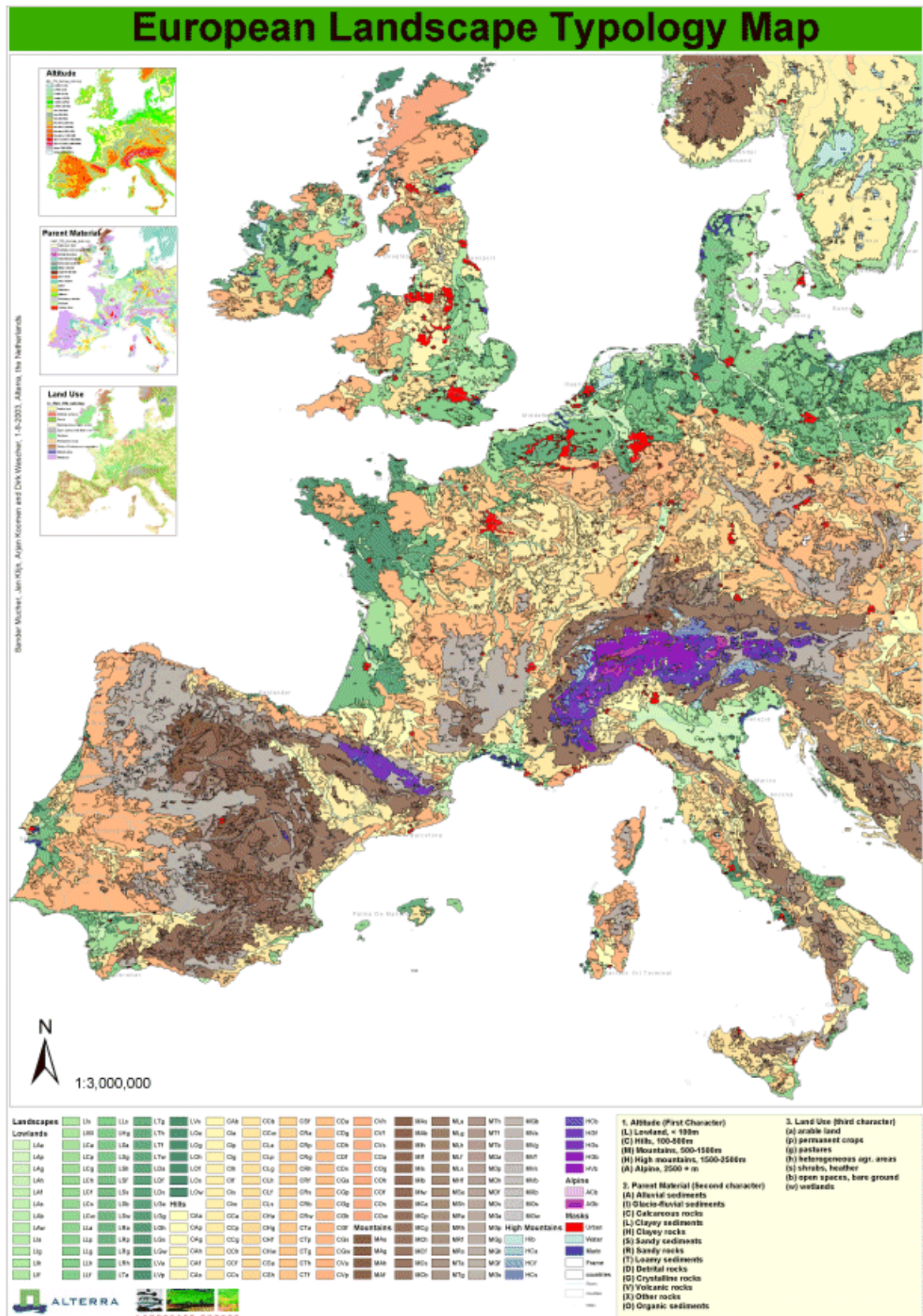


Fig. 3.4.2: Draft European Landscape Typology Map (Mucher, S., Klijn, J., Koomen, A. & Wascher, D. M., 2003)



4. Network News

Membership

The following institutes are now members of LANDSCAPE EUROPE:

Full members:

Alterra Green World Research
Countryside Council Wales (CCW)
Centre for Ecology & Hydrology (CEH)
Cemagref
University of Évora
Eidgen. Forschungsanstalt für Wald
Schnee und Landschaft (WSL)
Institute for Nature Conservation (IN)
Umweltforschungszentrum Leipzig-
Halle (UFZ)
Joint Research Centre (JRC)
Landbouw Economisch Instituut (LEI)
National Environmental Research
Institute (NERI)

Associate members:

Norwegian Institute of Land Inventory
(NIJOS)
University Central Lancaster (UCLAN)
Institut für Ökologie (IFO)
Instytut Geodezji i Kartografii (IGiK)
University Western Hungary, Institute of
Environmental Sciences, Sopron
Forum for the Future (FFTF)
University of Bukarest (UVB)

Executive Board

Since April 2003 two meetings of the Executive Board have taken place, one at Alterra Wageningen, end of April, and one in Leipzig September. Current composition of the Executive Board is:

- Alterra (NL): Bas Pedroli (general secretary)
- NERI (DK): Hanne Bach (treasurer)
- CEH (UK): Les Firbank
- UFZ (D): Rudolf Krönert
- Cemagref (F): Daniel Terrasson
- JRC (int): Maria Luisa Paracchini
- IN (B): Geert de Blust
- Évora (P): Isabel Joaquim Ramos

Network Co-ordinator is Dirk Wascher (Wageningen, NL)

Website

The LANDSCAPE EUROPE Office is currently negotiating to place its website in a neutral environment. At the same time the opportunity is being taken to modernize the layout of the website.

5. Partner Forum

Forum for the Future, UK

Landcare South West, a new way of working to achieve sustainable land use.

"Landcare South West is a proposal to help to develop and share good practice, integrated land use in the South West. It is being set up as a collaborative partnership between Forum for the Future and the statutory agencies, regional bodies, local authorities, NGO's and the private sector. Forum for the Future is the UK's leading charity for sustainable development.

As England's most rural region, the South West is an obvious choice to take the lead in delivering integrated land use and management. Its beautiful landscapes and thriving tourism, and its appeal for new high tech industry and renewable energy development, make it an ideal test bed for innovation.

Landcare South West aims for a common vision and agenda for action, a new shared method for integrated assessment of the land and its natural resources, and better use of existing approaches and funding streams.

Landcare South West will fast-track land and resource management regimes that succeed in delivering the good and services that society needs in a sustainable way.

For more information: <http://www.alterra-research.nl/pls/portal30/docs/FOLDER/LANDSCAPEEUROPE/LANDSCAPEEUROPE/NEWS/LIVINGPLAN5.PDF>

Joint Research Centre, Ispra, Italy

Workshop 23/24 June 2003 at JRC in Ispra

The present workshop aims at gathering scientific and technical expertise contributing to the IRENA indicators related to land-use/cover change and to Landscape (indicator 12 – Topological change; indicator 24 - Land cover change; indicator 32 -Landscape state; indicator 35 -Impact on landscape diversity- in Commission Communication COM(2001)144). In particular, there is a need to identify data sets and methods required for computing indicators at the appropriate geographical levels and able to support regional analyses. The proposed indicators should also provide a meaningful reference base for policy application, e.g. Agenda 2000 (rural development), for reporting according to the DPSIR framework (Driving Force - Pressure - State - Response); they should be analytically sound, easy to interpret and cost effective.

All information available at : <http://agrienv.jrc.it/news/>

Organizers: Maria Luisa Paracchini (luisa.paracchini@jrc.it),

The JRC Enlargement Action on workshops and temporary job opportunities

has been published on <http://www.jrc.cec.eu.int/enlargement>

You are kindly asked to circulate this information to your contacts.
The Western Balkan Countries are invited to participate in a selected area of training events and will be notified separately.

Deadline of 28.05.04 12.00H CET

6. Publications

- Baudry, J. & Burel, F. 2003. Landscape Ecology - Concepts, Methods and Applications. 378 pages
- Brandt. J. & Vejre, H. 2003. Multifunctional Landscapes Volume II - Monitoring, Diversity and Management, WIT Press, Southhampton, Boston, pp75-86
- Delbaere, B.(ed.) 2003. Environmental Risk Assessment for European Agriculture (ENRISK) – Interim Report. European Centre for Nature Conservation (ECNC), Tilburg, May 2003.
- De Groot,R.S., M.Wilson, R.Boumans. 2002 “A typology for the description, classification and valuation of Ecosystem Functions, Goods and Services” (p. 393-408). In: “The Dynamics and Value of Ecosystem Services: Integrating Economic and Ecological Perspectives”. Special issue of *Ecological Economics* Volume 41, Issue 3: 367-56.
- Dramstad, W. & Sogge, C. 2003. Agricultural impacts on landscapes: Proceedings from NIJOS/OECD Expert Meeting on Agricultural Landscape Indicators in Oslo, Norway October 7-9, 2002. Developing indicators for policy analysis, Norsk institutt for jord- og skogkartlegging, Ås2003 NIJOS rapport 07/2003, 350 pages
- Elbersen, B.; M. Pérez-Soba & J. Roos, 2001. The application of a European Union classification of dairy systems to The Netherlands, In: Bunce et al., Examples of European agri-environment schemes and livestock systems and their influence on Spanish cultural landscapes. Alterra-report 309, ISSN 1566-7197.
- EEA, 2003. Indicator Reporting on the Integration of Environmental concerns into Agricultural policy (IRENA), joint activity between DG Agriculture, DG Environment, DG Eurostat, DG JRC and the EEA to develop 35 agri-environment indicators described in Commission Communications COM(2000) 20 and COM(2001) 144.
- Mata Olmo, R., Harráiz, S., Gómez Mendoza, J., Allende Álvarez, F., López Estébanez, N., Molina Holgado, P. and Galiana Martín, L. 2003. Atlas de los Paisajes de España. Ministerio de Medio Ambiente, Universidad Autónoma de Madrid, FEDER/INTERREG IIC, 683 pages, 1 fold-out map & CD ROM
- Mücher,C.A.; Bunce, R.G.H., Jongman,R.H.G., Klijn, J.A., Koomen,A., Metzger, M. and Wascher, D.M., 2003. Identification and Characterisation of Environments and Landscapes in Europe. Wageningen, Alterra, Green World Research. Alterra-Report 832. 113 pp.; 33 figs.; 19 tables; 102 refs
- Opdam, P and Wascher, D.M. 2004 (in press). Climate change meets habitat fragmentation: linking landscape and biogeographical scale levels in research and conservation. Biological Conservation, Elsevier Publishers
- Tress B., Tress G., van der Valk A. and Fry G. 2003. Interdisciplinary and Transdisciplinary Landscape Studies: Potential and Limitations; Delta Series 2, Wageningen. 192 pages
- Regalp, 2004: Evaluation of impacts of EU and national public policy on the interrelation between regional development and cultural landscape change, Regional Development and Cultural Landscape Change: The Example of the Alps. cont WP3, 5th FP.
- Wascher, D.M. and Jongman, R.H.G. (eds.), 2004. European landscapes - classification, evaluation and conservation . A report submitted to the European Environment Agency, by LANDSCAPE EUROPE in collaboration with the European Centre for Nature Conservation, Tilburg (in press).
- Wright, I. A., Smeets, P.J.A.M., Elbersen, B., Roos, J., Pflimlin, A., Louloudis, L., Vlahos, G., Crabtree, J.R., Williams, S.M., Hinrichs, P., Endersen, E. and Pirringer, H., 1999. A protocol for building the ELPEN livestock policy decision support system. Macaulay Land Use Research Institute, Aberdeen, UK

7. Outlook

Expert Meeting on Farm Management Indicators and the Environment

Date: 8-12 March:

Place: Palmerston North, New Zealand

Organiser: OECD

Urban Green Strategic Meeting

Date : March 10th

Place: Alterra, Wageningen

Organiser: Leo van den Berg

Regional Governments for Sustainable Developments: Delivering Sustainable Development

Date: 22-25 March

Place: Cardiff

Issues of Sustainable Land Use in European Landscapes: Problems, Conflicts and Solutions

Date: April 14-18th

Place: Gödöllő, Hungary

Organiser: Landscape Tomorrow & Institute of Environment and Landscape Management at Szent Istvan University

Silvopastoralism And Sustainable Management International Congress

Date: April 18 – 23rd

Place: Lugo, Spain

Organiser: Departamento de Producción Vegetal (Escuela Politécnica Superior, Lugo). Santiago de Compostela Univ.

Transdisciplinary Challenges in Landscape Ecology

Date: March 30-April 2, 2004

Place: Las Vegas

Organiser: USA-IALE 2004 Symposium

Further information: www.usaiale.org/lasvegas2004

Agricultural Risk Zones for Landscapes and Biodiversity

Date: May 5th-6th

Place: Murcia, Spain

Organiser: European Centre for Nature Conservation

Future Landscapes: Working with the principles of the ELC

Date: May 7-9th

Place:

Organisers: ICOMOS-IUCN-UK

LANDSCAPE EUROPE General Assembly

Date: May 17-18th

Place: EEA, Copenhagen

Organiser: Landscape Europe

UNESCO Kulturerbe Mittelrheintal

Date: May 20-21st

Place: Koblenz, Germany
Organiser: Arbeitskreis Deutscher Landschaftsanwaelte

European Landscape Character Assessment International Workshop

Date: June 3/4th
Place: Evora, Portugal
Organisers: University of Évora & LANDSCAPE EUROPE

Multiple Landscape: merging past and present in landscape planning

Date: 7-9 June 2004
Place: Wageningen
Organiser: ISOMUL, Land Use Planning Group (Wageningen University) and NWO (Program Protecting and Developing the Dutch Archaeological-Historical Landscape)

Conference of Contracting and Signatory States of European Landscape Convention

Date: June 17-18th
Place: Strasbourg
Organiser: Council of Europe

Greenways

Date: July 15-16th
Place: Sopron, Hungary
Organiser: Western Hungarian University

Symposium: Political & Economic Driving Forces of Landscape Change

Date: September 11-12th
Place: Chicago
Organisers: Department of Landscape Architecture, The University of Illinois at Urbana-Champaign and the Landscape Architecture Foundation

One Region, Many Stories: Mediterranean Landscapes in a Changing Europe (The 21st session of the Permanent European Conference for the Study of the Rural Landscape)

Date: September 15 – 21, 2004
Place: Myrina, Limnos and Molyvos, Lesvos, Greece
Organizer: Department of Geography, University of the Aegean, Lesvos, Greece; Department of Geography, University of the Aegean, Lesvos, Greece

Landscape symposium "Culture and Environment"

Date: November 25-27
Place: Banská Stiavnica (Slovakia)
Organiser: Miklos

From knowledge of landscapes to landscaping action

Date: December 3-4th (deadline for abstracts: 31 March)
Place: Bordeaux, France
Organiser: French Government's Ministry of Ecology and Sustainable Development
Information: <http://landscape.lyon.cemagref.fr/colloquepaysage@bordeaux.cemagref.fr>

IALE Landscape Ecology European Congress 2005: Landscape Ecology in the mediterranean: Inside and Outside Approaches

Date: 29th of March to 2nd of April, 2005
Place: Faro, Portugal
Organizers: APEP
Further information: www.apep.pt

SUBSCRIBE-UNSUBSCRIBE

If you wish to subscribe or unsubscribe, please send us an email
landscape.europe@wur.nl.

LANDSCAPE EUROPE's E-Newsletter

Alterra

P.O. Box 47

6700 AA WAGENINGEN

The Netherlands

Tel: + 31 317 477768 Fax + 31 317 419000

E-mail: landscape.europe@wur.nl.

web site: <http://www.alterra-research.nl/landscapeeurope>

Newsletter on-line at: <http://www.alterra-research.nl/landscapeeurope>