




Issue No. 13 – May 2011

1. Introduction

After our inspiring and well-visited  LIVING LANDSCAPE Conference in Florence October 2010 (organised in cooperation with UNISCAPE, see picture right), we have had our General Assembly in Roskilde in November 2010, devoting at the same occasion a seminar to the increased tendency of energy cropping in the landscape.



At the General Assembly much appreciation was expressed to the Network Office for the recent activities (new LANDSCAPE EUROPE website, Living Landscape Conference, VOLANTE project, ESF-COST SPB briefing, re-launching of the ATLAS website, etc.). Alterra indicated that after 10 years they consider it time to transfer the Network Office to another pro-active member. It was decided that at the next General Assembly (13 October 2011) a new Executive Board will be elected and a new host of the Network Office will be nominated. Members can announce their candidacy to the Network Office.

Another development in which LANDSCAPE EUROPE has contributed was the Science Policy Briefing on Landscape Research issued by ESF and COST. This will be taken up by LANDSCAPE EUROPE and UNISCAPE in cooperation with other networks, to enter a dialogue with major stakeholders in Brussels on 14 October 2011 and start implementing the recommendations.

LANDSCAPE EUROPE is also providing views and recommendations for the new research programme prepared by the *EC DG Research and Innovation* for after 2013.

This is the 13th Newsletter of LANDSCAPE EUROPE, International Network of Expertise on Landscape. More information on LANDSCAPE EUROPE you can find on our website: www.landscape-europe.net. Please feel free to forward the newsletter to other interested people in the wide field of landscape science that seeks to integrate natural, social and economic research. If you do so, please ask them to mail (landscape.europe@wur.nl) their contact information.

On behalf of LANDSCAPE EUROPE:

Bas Pedroli (Bas.Pedroli@wur.nl)
secretary general

Dirk Wascher (Dirk.Wascher@wur.nl)
network coordinator

2. *LANDSCAPE EUROPE* membership

Membership

The following institutes are now members of LANDSCAPE EUROPE:

Full members:

- Alterra Wageningen UR
- Centre for Ecology & Hydrology (CEH)
- Research Institute for Nature and Forest (INBO)
- Umweltforschungszentrum Leipzig-Halle (UFZ)
- Joint Research Centre (JRC)
- Aarhus University – National Environmental Research Institute (NERI/AU)
- University of the Aegean (Aegean)
- Federal Agency for Nature Conservation (BfN), Department for Habitat Management and Landscape Ecology
- University of Dortmund, Chair of Landscape Ecology and Landscape Planning (LLP)
- Leibniz Institute of Ecological and Regional Development (IOER)
- Charles University of Prague, Faculty of Science, Department of Physical Geography and Geoecology (KU)

Associate members:

- Norwegian Forest and Landscape Institute
- University of Vienna, Institut für Ökologie (IFO)
- University of Bucharest (UNIBUC)
- University of Tallinn (TU)
- University of Salzburg (Z_GIS)
- Landbouw Economisch Instituut (LEI – Wageningen UR)
- University of Udine, Department of Crop and Environmental Science (DISAA)
- Institute of Landscape Ecology of the Slovak Academy of Sciences (ILE SAS)
- University of Alcalá de Henares (UAH)

Executive Board

Current composition of the Executive Board:

- Alterra (NL): Bas Pedroli (secretary general)
- AU-NERI (DK): Pia Frederiksen (treasurer)
- CEH (UK): Paul Scholefield
- UFZ (D): Christoph Görg
- Cemagref (F): Daniel Terrasson a.i.
- JRC (int): Maria Luisa Paracchini
- INBO (B): Geert de Blust
- TLU (EE): Hannes Palang

Network Co-ordinator is Dirk Wascher (Wageningen, NL)

Website and Forum page

The website of LANDSCAPE EUROPE, www.landscape-europe.net, has updated information on conferences, publications and international vacancies. For more information please contact the webmaster (marion.bogers@wur.nl)

3. Contributions

A new face in the LANDSCAPE EUROPE Network Office?

Peter Bezák

The LANDSCAPE EUROPE Network is looking into options to transfer its secretariat to a new institution, and ILE SAS (the Slovak Institute of Landscape Ecology) were the first to have presented themselves as a candidate. Below is an introduction to ILE SAS and their proposed contact person.

The Institute of Landscape Ecology of the Slovak Academy of Sciences (ILE SAS) is an interdisciplinary scientific institution for both basic and applied research in landscape ecology. It is the continuer of the Institute of Landscape Biology of SAS that was the first one in former Czechoslovakia started to deal with the problems of landscape ecology. In the previous century success of the Institute was connected with the following achievements of the international importance:

- establishment of the International Association of Landscape Ecology (IALE) at the sixth International Symposium on Problems on Landscape Ecological Research, organised by ILE SAS in Piešťany in 1982
- development of the methodology of landscape-ecological planning LANDEP, recommended by the Agenda 21 (Rio Summit 1992) for integrated approach to the management of natural resources

Landscape has been an object of research of ILE SAS from the beginning, main tasks are focus on basic research in the landscape (abiotic, biotic and socio-economic landscape elements) but also on processes and interactions at various temporal, spatial and disciplinary scales. It does include topics of landscape under global changes (e.g. changes in land use, ecosystems, livelihood), driving forces of the landscape changes, visions and perception of the landscape, long-term socio-ecological monitoring, management measures for sustainable development of the landscape.

ILE SAS has a rich experience in international cooperation and has been participated in numerous international projects, including the EU Framework Programmes (FP5-7) and is part of several international networks (e.g. ALTER-Net, LTER EUROPE, ILTER, Science for the Carpathians). ILE SAS is an expert organisation of the European Environmental Agency for biological diversity and monitoring expert team of the European Commission for implementation of the environmental actions within LIFE.



Peter Bezák obtained a PhD in regional geography at the Comenius University in Bratislava in 2002 and joined ILE SAS in the same year as a researcher in the Dept. of Biodiversity of Ecosystems and Landscape. His base experience includes complex regional-geographical research in connection to human interventions, nature protection, environment and planning. During his engagement at ILE SAS he participated in several national and international projects (e.g. Evaluwet, Bioscene, Biopress, Alter-Net) dealing with landscape changes, landscape management, impact on environment, drivers of and pressures on biodiversity, sustainable development, nature protection, environment policy, etc. From July 2005 onwards he is also a monitoring expert of the EC for LIFE-Nature projects in CEE countries dedicated to the support of the Natura 2000 sites. His current duties at ILE SAS are related to project implementation and dissemination of their results (project reports, attendance to and organisation of conferences/workshops, publication activities) and also to the field work, mostly oriented on a participatory approach and collecting a variety of information about the landscape. Peter enjoys to work within the team of ILE SAS colleagues and especially field trips to the landscape belong to his favourite activities (*once to see is better than thousand times to read*).



VOLANTE: Visions of Land use Transitions in Europe

Bas Pedroli/Marion Bogers

The VOLANTE project (see www.volante-project.eu) in which six LANDSCAPE EUROPE members participate, had its kick-off in December last year. Below an outline of the project objectives:



PROJECT OBJECTIVES

Sound policies for future land use require informed visions.

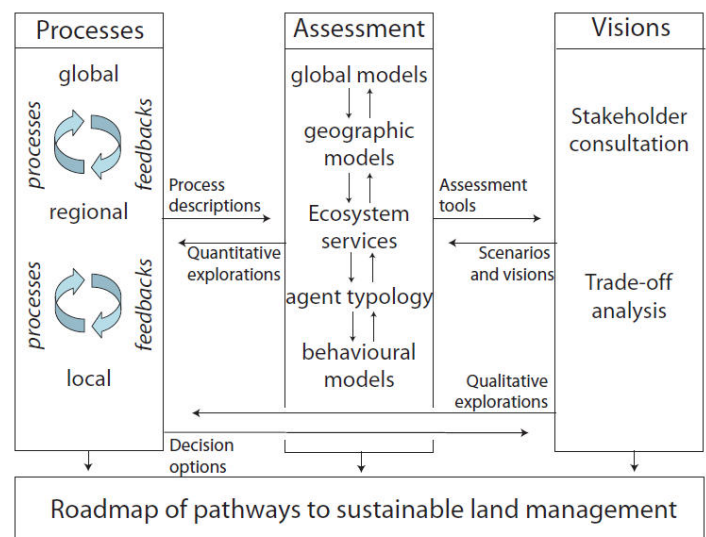
Objective of VOLANTE is to provide European policy and land management with clear visions how to reduce the large variation in possible land use scenarios for the future to a manageable set. Land system science represents the unifying research direction integrating the many disciplines needed to inform these visions.

Critical thresholds are associated with crucial points of no return; they help to explore the means to prevent ending up in these points. VOLANTE will therefore identify policy options for the various landscapes of Europe and for shorter and longer term perspectives. The consequences of these policies in terms of providing landscape and ecosystem goods and services will be object of a comprehensive evaluation. Prominent decision makers and stakeholders will interactively discuss the conclusions of this evaluation, leading to a *Roadmap for Future Land Resources Management in Europe*.

METHODOLOGY

To realise this, VOLANTE is designed in three Modules to gain better understanding of the PROCESSES underpinning land use change in Europe, to exploit ASSESSMENT tools that are capable of identifying critical pathways for land management in a variety of environmental and management regimes across Europe, and to develop VISIONS on the role of land management.

VOLANTE brings together researchers with experience and expertise on land use change at various spatial and temporal scales enabling a focus on vision development. Module PROCESSES identifies land use change and the processes causing these, testing unproven hypotheses by extensively using the experience gained in earlier projects and studying crucial missing links. Problem orientation is the basis for the Module ASSESSMENT which will narrow down the infinite spectrum of policy decisions possible. Module VISIONS establishes interaction with decision makers at regional and European level, to enhance an evidence based and problem oriented science-policy interface. A special, professional and consistent effort will be made to gather the views of a broad set of stakeholders and to include them in all steps of the process.



Why draw landscapes?

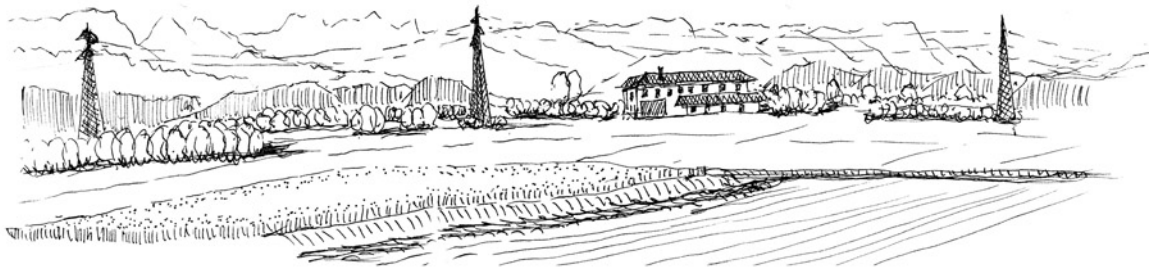
Johan Meeus (Translation: Jean Tee)

I don't make drawings of the landscape because I like to make strokes across a paper. Quite the reverse: through my strokes I try to understand the three-dimensional structure of the space. This forces me to make sharp observations and be very focused for a short amount of time.



Cousy le Château-Auffrique, Aisne, France 2005

My intention with a sketch is to depict the atmosphere of a landscape; to indicate the proportions of buildings and plants to the open space; and finally hint at the materials, all in about ten minutes. In order to do this, I need to confine myself to what I consider to be the essence of the landscape.

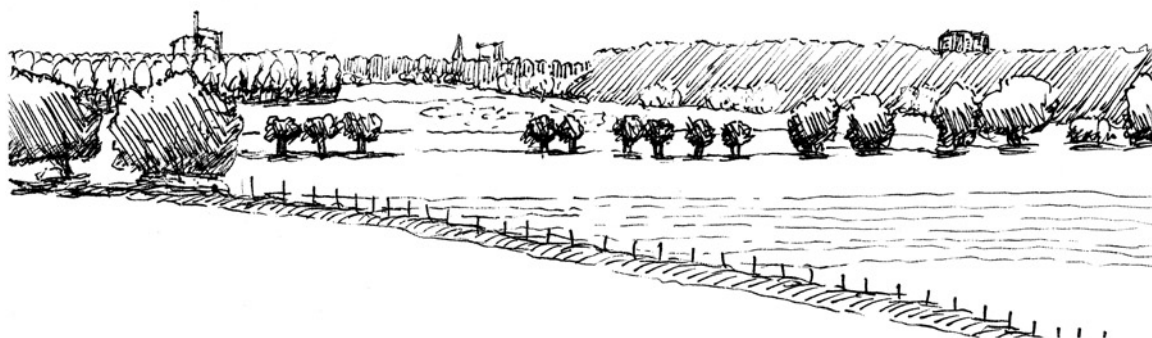


Rice fields, Piemonte, Buronzo-Formace, Italy 2008

I also have to restrain myself from overdoing it. If I take too long and try to put in too much at the same time, I lose sight of what is essential and the drawing gets ruined. My objective is not to depict all the leaves on a tree or all details of a building, but rather to portray these objects in their surroundings, making up the space together.

I primarily make the sketches for myself, to remember a landscape by that made an impression on me. When I'm finished with my observations in the field, I stop working on the sketches, because I'm afraid I would otherwise draw in so many details or jazz them up in such a way that the initial experience is lost. To me, the field-sketch is either finished or a failure. The first drawings of a series always fail. I'm not sure why, but only after some exercise, the sketching is done faster and more effectively. Besides, it turns out that the subsequent drawings of a certain landscape are already set in my strokes across the paper, so that later drawings become much sharper.

The aim is to use the smallest amount of lines as possible to still be able to give the impression of a landscape.



Uiterwaarden Randwijk, Wageningen, The Netherlands 2007

Fragaria-Project: Downscaling of the European Landscape Indicator

Dirk Wascher and Maria Luisa Paracchini

As part of the framework contract 'FRAGARIA' between Alterra and the European Commission's Joint Research Centre (JRC), a sub-project on the 'downscaling of the European Landscape indicator' has been finalised in March. Working in a team with the Universities of Reading, Copenhagen, Evora and Florence, Alterra led a small but very targeted project in support to the implementation of a component of the EC agri-environmental indicator on "landscape state and diversity" (COM (2006)508 "Development of agri-environmental indicators for monitoring the integration of environmental concerns into the common agricultural policy") which is currently under development at JRC. Such component is a proxy for the 'social appreciation/awareness of the rural-agrarian landscape', and concerns the way the society perceives, reads and assesses landscape quality. In an initial approach developed by JRC (Paracchini M.L., Pinto Correia T., Ramos I.L., Capitani C. (2010). "Indicators to assess rural landscape valuation: how and what is measured at different levels of governance". Proceedings of the Conference "Living Landscape – the European Landscape Convention in research perspective", Florence 18-19 October 2010) societal appreciation of landscapes has been detected by using information on landscape protection and specific forms of landscape consumptions in terms of food, recreation and various other welfare functions.

The JRC indicator is built up by a linear combination of three indices, which refer to following specific aspects:

Certified products, including food and spirits under the Protected Denomination of Origin (PDO) and Protected Geographic Indication (PGI) schemes, and wines under the Vin de Qualité Produit dans des Régions Déterminées (VQPRD) scheme;

Tourism in rural areas;

Agricultural areas in protected and valuable sites.

The study that has been carried out in five test regions in the respective team member countries and comprised the following steps: (1) implementing the European methodology with regionally available data at the second level of Local Administrative Units (LAU2), (2) identification and testing of alternative data sources on both European and regional level, and (3) stakeholder based analysis of possibilities to include 'complementary' elements (indices) based on step (2) by means of questionnaires and meetings.

The study produced a wide range of detailed indicator assessments, resulting in a total of 67 map products. From the many assessments and comparisons we show only one example from a study region in Southern Denmark. Figure 1 shows the combined

results of data sources available at the regional level, which include data on steers and lambs from the saltmarsh landscapes of Wadden Sea region, the membership figures of the National Association for Agri-Tourism, and the national breakdown of the Natura 2000 area network to LAU2 level.

Despite the limited resources, the study makes a major contribution to the question of regional vs. European representations of indicator assessments, a question that has been raised frequently by many research and policy experts. The results demonstrate, that available regional data sets and methods – though fragmented and inconsistent they may be – should be considered as a valuable source for reviewing and validating European approaches. Having had the chance to undertake such a study for the challenging field of social landscape indicators makes this study especially valuable. The full report will be published in Summer 2011 by the Joint Research Centre of the European Commission.

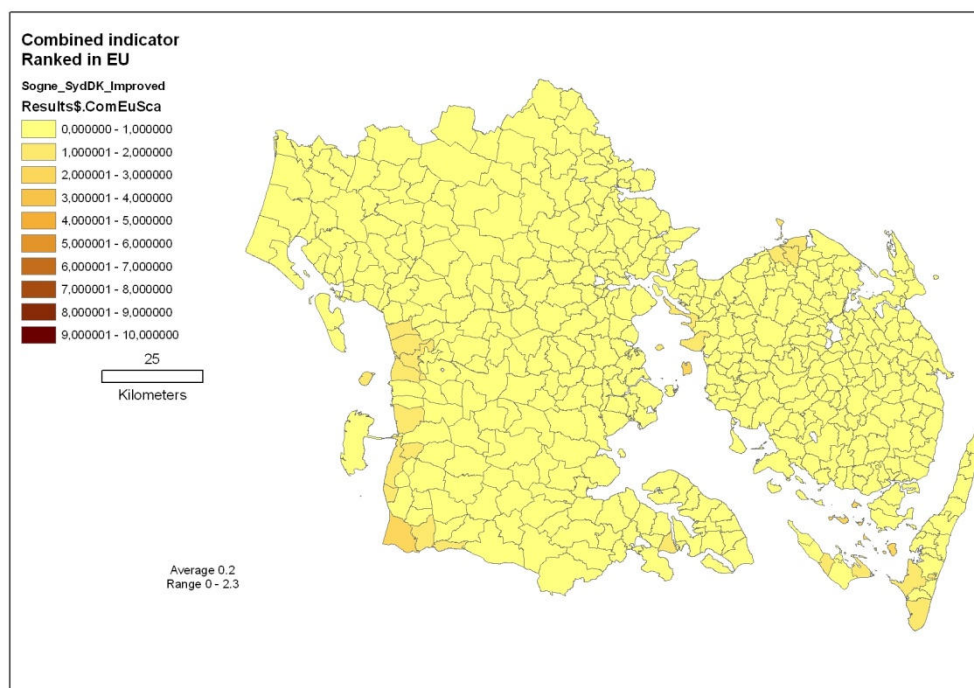


Figure 1: Combined indicator on social appreciation of the landscape (ranked in EU) downscaled for the case study region Southern Denmark. White areas are regions with no agricultural area.

4. Network News

ATLAS website on the provision of landscape education courses in Europe re-launched

As from 1 May 2011 the ATLAS website has a new host: <http://atlas.uniscape.eu>. This is a very enjoyable development. Since LANDSCAPE EUROPE together with landscape Tomorrow and ECLAS had developed the website in a FP6 project for DG Research (launch January 2007), it has been taken up at several occasions but structural revision was hampered by the hosting of the site. It was then decided that LANDSCAPE EUROPE and Landscape Tomorrow would continue to support it, but that an offer from UNISCAPE to host the ATLAS website was gratefully accepted. Andrea Tramontana of UNISCAPE has taken this up in the past half year, and has invested much efforts to update it. All European universities and higher education institutions are invited to check the contents of the website and provide eventually updated information. Ambition is that the website develops into the main hub for information on higher education landscape courses in Europe, with a lot of additional information associated to it. Of course students will benefit greatly from that, but at the same time also the universities themselves will be able to improve their profile and image.

Landscape Europe General Assembly Thursday 13 October 2011, Brussels

At the 2011 General Assembly a new Executive Board will be elected and a decision will be taken about a new host of the Network Office, since Alterra has indicated that they wish to transfer the Network Office to another member after hosting it for 10 years.

The Assembly will be held in Brussels at the occasion of an invitational conference (14 October 2011) following up the recommendations of the ESF-COST Science Policy Briefing which was launched in our Living Landscape Conference last 18 October 2010 in Florence (see www.esf.org/publications/science-policy-briefings.html).

Landscape in a Changing World (14 October 2011, Brussels)

Objective

To discuss opportunities and define actions answering demands for a stronger impact of landscape research on European policy and society.

Background

The ESF-COST SPB on landscape research (SPB41, published in October 2010) emphasises the contributions that the idea of landscape can make to bridging divides, integrating disciplines and serving society in the perspective of meeting the 'grand challenges' – social, economic and environmental – that currently face Europe (and the wider world). It recommends establishing:

- A European Vision and Strategy for Landscape Research,
- A European Forum on Landscape, and
- An Integrated European Landscape Research Programme.

This invitational seminar is meant as a first convocation of an embryo European Forum on Landscape in order to begin addressing the other two recommendations.

Challenges for research and policy

The landscape research community is already challenged to ensure that the results of research inform policy and decision-making to appropriate degrees, and that the effects of new development are clearly monitored and predicted. Equally, however, policy-makers at national and European levels and stakeholders with competence in policy development are challenged to reflect on the relationship of their policies (and their implementation) to changing landscapes.

Product

The seminar aims to prepare a draft Action Plan for reinforcing the reciprocal relationship between research and policy, notably in the areas of Climate and Energy, Spatial Planning and Territorial Development, Agriculture, and Environmental protection. The Plan will be framed in relation to incentives relevant for the science-policy interface in the area of landscape such as Joint Programming Initiatives, COST and ESF strategic actions or ERA-Nets, and eventually the European Forum on Landscape may be able to establish ad hoc Task Forces suited to advising EC policymakers on practical ways to include the landscape perspectives in European policy development.

Further information will become available soon.

5. Events

A) EnviSDI – Summer School on “Spatial Data Infrastructure for environmental datasets”

June 27 - July 8, 2011 in Salzburg, Austria

The “Centre for Geoinformatics” (Z_GIS) at Salzburg University is a well-established centre of competence in GIScience, active in research, education and industry cooperation. With the competence built from basic and applied research funded through international programmes, Z_GIS engages in educational and capacity building activities, outreach initiatives and international collaboration projects.

The international Summer School EnviSDI aims at establishing a European education network to improve the access to spatial environmental data. The Summer School considers aspects of data organization, data harmonization as well as semantic and technical interoperability to produce seamless geospatial information across Europe and to improve the data access for a wide community of user groups. Learning about methodologies and the application of structural specifications for the description and harmonization of spatial environmental data within Europe as well as the operation of a corresponding Spatial Data Infrastructure (SDI) are main objectives.

Applications are accepted until May 15, 2011. Due to limited places we strongly recommend an early registration! <http://www.edu-zgis.net/ss/envisdi2011>

Contact:

Hermann Klug
University of Salzburg | Centre for Geoinformatics - Z_GIS
Tel: +43 (0)662 8044-5261
Envisdi2011@edu-zgis.net

B) Doctoral College GIScience - Worldwide Call for Applications

www.uni-salzburg.at/giscience

A new long term GIScience doctoral school was awarded to the University of Salzburg under the prestigious and highly competitive 'DK' framework of Austria's National Science Fund (FWF). Three interconnected, interdisciplinary research clusters have been defined:

- Representations and Data Models is focused on research into the conceptual modelling of space, spatial features and phenomena, and provides a spatial view of various categories of physical and abstract information objects in order to reveal the potential power of the 'spatial perspective'.
- Time and Process research will leverage the increasing availability of real-time sensor data, the importance of process-oriented modelling, and will address the need for temporal modelling beyond simple discrete time slices.
- Spatialization, Media and Society considers user perspectives and utilizes geospatial communication as a hypotheses generator for geospatial research: cognitive processes lead to mental maps which are highly relevant for actions, which in turn modify physical and societal spaces.

Supported by the Austrian Science Fund (FWF), the program offers 9 scholarships for doctoral researchers at the Paris Lodron University Salzburg funded by the FWF (www.fwf.ac.at)

Important dates:

- First Application deadline: 20 April, 2011 (later applications may be considered)
- Selection workshop (for pre-selected applicants): end of May / early June, 2011
- Start of the program: Early October.

Contact and Information:

Erika Blaschke
University of Salzburg | Centre for Geoinformatics - Z_GIS
Doctoral College GIScience
Phone: +43 (0)662 8044 5211 | E-mail: giscience@sbg.ac.at

6. Recent Publications

- Bloemers, T., S. Daniels, G. Fairclough, B. Pedroli & R. Stiles (eds., 2010): *Landscape in a changing world. Bridging Divides, Integrating Disciplines, Serving Society*. Science Policy Briefing ESF-COST nr 41, Strasbourg / Brussels. 16 p. www.esf.org/publications/science-policy-briefings.html.
- Dramstad, W.E., 2009. *Spatial metrics - useful indicators for society or mainly fun tools for landscape ecologists?* Norsk Geografisk Tidsskrift-Norwegian Journal of Geography 63, 246-254.
- Dramstad, W.E., Sang, N., 2010. *Tenancy in Norwegian agriculture*. Land Use Policy 27, 946-956.
- Gómez Delgado, M. y Bosque Sendra, J. Validation of GIS-performed analysis. 2009 In Joshi, P.K.; Pani, P.; Mohapartra, S.N. y Singh, T.P. (Eds.): *Geoinformatics for natural resource management*. New York, NOVA Science Publisher.
- Lavolette, P. 2011. *Extreme Landscapes of Leisure. Not a Hap-Hazardous Sport*. Ashgate Publishing Group.
- Paassen, A van, Berg, J van den, Steingrover, E. Werkman, R. & Pedroli, B., 2011. *Knowledge in Action. The search for collaborative research for sustainable landscape development*. Mansholt publication series - Volume 11, Wageningen Academic Publishers, 319 p.
- Pedroli, B. & T. Goodman (2010): *Landscape as a project. A survey of views amongst UNISCAPE Members. Reactions to a Position Paper of Franco Zagari*. UNISCAPE, Florence. 181 p.
- Pineda Jaimes, N.B.; Bosque Sendra, J.; Gómez Delgado, M. & Franco Planta, R. "Exploring the driving forces behind deforestation in the state of México (México) using geographically weighted regresión", Applied Geography, in revision.
- Plata Rocha, W.; Gómez Delgado, M. y Bosque Sendra, J. "Spatial and statistical analysis of factors explaining urban growth in Madrid region (Spain)", Geographical Analysis, in revision.
- Reenberg, A., B. Pedroli & M. Rounsevell (2011): *The GLP mindset in action: New EU-FP7 project VOLANTE develops visions for future land use transitions in Europe*. Newsletter of the Global Land Project International Project Office. GLP NEWS no.7, March 2011: 17-20.

7. Outlook

Stimulating, enjoyable and instructive Landscape Perception Workshops: What is your relationship with the Landscape?

Date: May to September 2011

Place: French Pyrenees

Organisers: www.regarding-landscapes.com

IFLA World Congress: From Urban Landscapes to Alpine gardens

Date: 27-29 June 2011

Place: Zurich, Switzerland

Organisers: IFLA

Further information: www.ifla2011.com/schedule.html

Geoinformatics Forum Salzburg 2011

Date: 5 - 7 July 2011

Place: Salzburg, Austria

Organisers: GI Forum and Z_GIS

Further information: www.gi-forum.org

Spatial Ecology and Conservation

Date: 5 - 7 September 2011

Place: Birmingham, UK

Organisers: University of Birmingham

Further information: <http://www.ert-conservation.co.uk/SEC1-Homepage.htm>

Forest management and silviculture in the north – balancing future needs

Date: 6 - 8 September 2011

Place: Stjørdal, Norway

Organisers: IUFRO - NORFOR

Further information: <http://seminar.skogkurs.no/silviculture2011>

SCIENCE FOR THE ENVIRONMENT - environment for society

Date: 5 - 7 October 2011

Place: Aarhus, Denmark

Organisers: NERI

Further information:

www.dmu.dk/en/news/arrangements/conferences/environmentconference2011

SUBSCRIBE-UNSUBSCRIBE

If you wish to subscribe or unsubscribe this newsletter, please send us an email landscape.europe@wur.nl.

LANDSCAPE EUROPE 's E-Newsletter

c/o Marion Bogers, Network Office

P.O. Box 47

6700 AA WAGENINGEN

The Netherlands

Tel: + 31 317 481813 Fax + 31 317 419000

E-mail: landscape.europe@wur.nl

Website: <http://www.landscape-europe.net>

Newsletter on-line at: <http://www.landscape-europe.net>